

About Besmile

Besmile is a global digital solutions provider for restorative and implant dentistry.

We offer integrated systems—premium CAD/CAM materials, advanced equipment, and precision implant systems—designed to streamline workflows and ensure reliable results.

All core products are developed and manufactured in-house, ensuring consistent quality and continuous innovation.

Trusted by over 1,000 partners in more than 100 countries, we empower dental professionals to create confident, lasting smiles.

Technology creates the best smile.



Chengdu Besmile Biotechnology Co.,Ltd.

www.bsmdental.com

T: +86-28-85317108

E: info@cdbesmile.com

Besmile Dental America Inc.

20311 Valley Blvd, Suite#1, Walnut, CA91789

T: (626)921-5798

E: sales@bsmdentalus.com

Contact Us



@Besmile



@besmile_aconia

BSM

Artamic

ESTHETIC SYSTEM

Stain | Glaze | Porcelain Powder

VI.1.1

Artamic

Efficiency Upgrade

Unlock the **Artamic Esthetic System** - your solution for creating natural-looking restorations with ease.

This system includes three categories of products: staining pastes, porcelain powders, and 3D glazes, providing dental technicians with professional aesthetics, quickly and effortlessly.

Table of Contents

- Stain/Glaze Kit 2
- 3D Glaze Paste..... 8
- Porcelain Powder10
- Firing Parameters.....12



Artamic Stain/Glaze

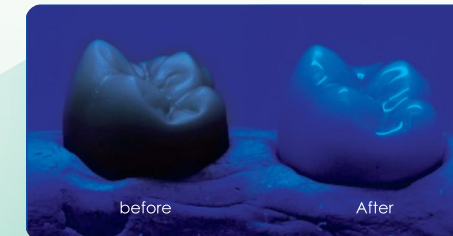
Instant Perfection for Natural Esthetics

Artamic Stain/Glaze makes it easy for dental technicians to create natural-looking restorations. Technicians can achieve natural and consistent results with just one application. It is perfect for use on zirconia, glass ceramic, and porcelain restorations.

The Artamic Stain/Glaze series include stain pastes, glaze pastes, 3D glaze pastes, and blending liquid. The extensive choices of stains are ideal for everyday common restorations but also perfect for the most demanding esthetic cases. The 3D Glaze pastes enable technicians to build shapes and create surface textures.



■ Lifelike Fluorescence



This effect simulates the natural fluorescence of teeth, enhancing the lifelike quality of the restoration.

■ User-Friendly

The optimal viscosity of the paste allows you to start staining immediately without prior mixing.

■ Wide Temperature Range

The flexible temperature range allows the pastes to be used on zirconia, glass ceramics, and porcelain-fused-to-zirconia (PFZ) restorations. The paste provides an esthetic effect even at firing temperatures as low as 740 °C. This property enables users to stain and glaze glass ceramics while ensuring reliable performance during the high-temperature firings required for zirconia.

■ Predictable Shade

Our stain's exceptional stability ensures consistent shades both before and after firing, providing you with predictable results.

■ Instant Glossiness

The unique glaze formula in the stain paste allows you to create a natural gloss effect in just one application.

Artamic Stain/Glaze

Aconia + Artamic: From 5 to 16 Made Simple

Achieve all 16 VITA shades with just 5 Aconia disc shades by using Artamic Stain/Glaze. Simplify your workflow and inventory management with this efficient, versatile solution.

A1

A3

B1

C1

D2

+5 stains (A/B/C/D3/D4) = VITA 16

Aconia	Artamic stain/glaze	Times of application	Incisal	Results (VITA)
A1	Shade A	1	Blue/Purplish Gray	A2
A3	Shade A	1		A3.5
A3	Shade A	2		A4
B1	Shade B	1		B2
B1	Shade B	2		B3
B1	Shade B	3		B4
C1	Shade C	1		C2
C1	Shade C	2		C3
C1	Shade C	3		C4
D2	Shade D3	1		D3
D2	Shade D4	1		D4



Material Properties

CTE (25-500°)	(10.3±0.5)*10 ⁻⁶ /K
Chemical solubility	<100µg/cm
Specification	Stain/Glaze Paste - 6g/jar
	Blending Liquid - 20ml/bottle
Strength	>50Mpa

*Storage Conditions: To be kept at room temperature

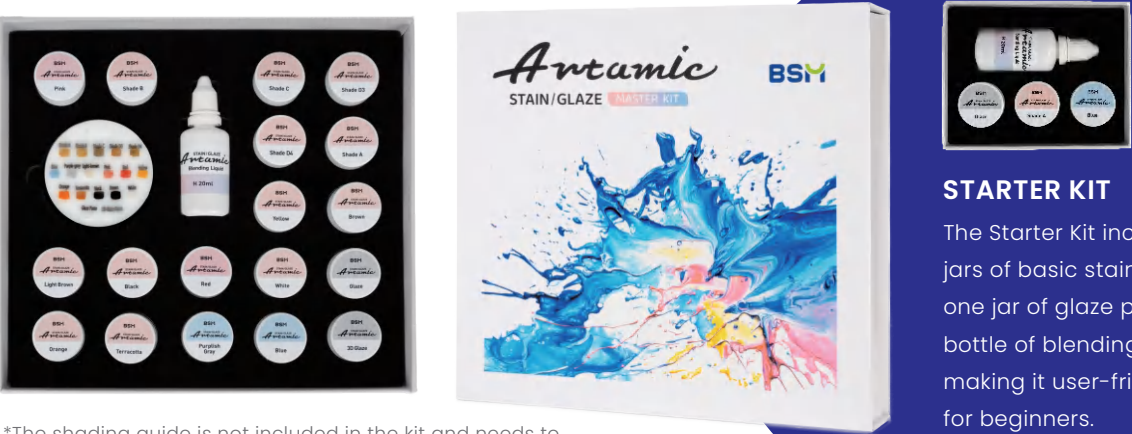
Artamic Stain/Glaze Selection of Kits

The Artamic Stain/Glaze series offer three different sizes: Master Kit, Gingiva Kit and Starter Kit.



MASTER KIT

The Master Kit includes all the essential stain and glaze pastes in the Artamic Esthetic System, along with a bottle of blending liquid, giving you the flexibility to meet various staining needs.



*The shading guide is not included in the kit and needs to be ordered additionally as an accessory.

Dentine shades	A	B	C	D3	D4			
Glaze	Translucent	3D Glaze	Incisal shades	Blue	Purplish Gray	Gingival shades	Red	Pink
Adjustment shades	Yellow	Brown	Light Brown	Black	White	Orange	Terracotta	

GINGIVA KIT

The Gingiva Kit includes 6 gingiva shades, 2 3D gingiva shades, and a bottle of blending liquid for creating detailed gingival effects.



*The Gingiva Kit includes 6 gingiva shades, 2 3D gingiva shades, and a bottle of blending liquid for creating detailed gingival effects.

Gingival Shades	Red	Pink	Light Pink	Orange Pink	Purplish Red	Reddish Brown	
3D Gingiva	3D Light Pink	3D Orange Pink					

Artamic 3D Glaze

■ Building Shapes

The Master Kit includes all the essential stain and glaze pastes in the Artamic Esthetic System, along with a bottle of blending liquid, giving you the flexibility to meet various staining needs.

Restoring contact between neighboring teeth

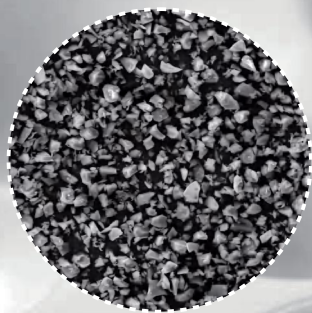
Restore occlusion

■ Detailing Surface Texture

3D Glaze allows users to add detailed textural features for customized dental esthetic results.

■ Efficient Processing

Users can complete the staining and glazing process in a single firing without vacuum, saving time and improving efficiency.



500x magnification under electron microscope

■ 3D Gingiva

New 3D Light Pink and 3D Orange Pink are designed to create detailed gingiva features.



Detailing surface texture on tooth and tissue

Artamic Porcelain Powder

An advanced solution for complex restorations

MASTER KIT

The Master Kit includes all the essential stain and glaze pastes in the Artamic Esthetic System, along with a bottle of blending liquid, giving you the flexibility to meet various staining needs.

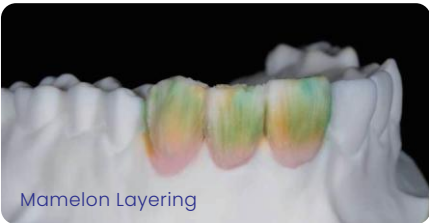
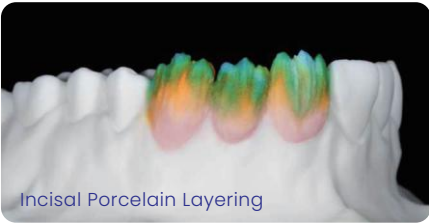
High Firing Stability

Artamic Porcelain Powder offers stable firing shrinkage and excellent edge bonding. Its physical properties similar to natural teeth enamel allow users to complete some restorations after just one firing.

Consistent Shade

Artamic Porcelain Powder maintains a consistent shade even after multiple firings.

Cases



Full Range of Shades

Artamic Porcelain Powder offers a full range of shades and ceramic materials, including 42 dentine shades, 7 effect shades, and more. This extensive selection allows users to easily create both basic and complex restorations.

NT(Neutral)	NT													
WIN(Window)	WIN													
EN(Enamel)	L		D											
E(Cffect)	O2	L4	OM3	C1	G1	G2	G3							
TD(Dentine)	A1	A2	A3	A3.5	A4	B1	B2	B3	B4	C1	C2	C3	C4	D2
	D3	D4	1M1	1M2	2L1.5	2L2.5	2M1	2M2	2M3	2R1.5	2R2.5	3L1.5	3L2.5	3M1
	3M2	3M3	3R1.5	3R2.5	4L1.5	4L2.5	4M1	4M2	4M3	4R1.5	4R2.5	5M1	5M2	5M3

Material Properties

CTE (25-500°)	(10.3±0.5)*10 ⁻⁶ K ⁻¹
Flexural strength	≥100Mpa
Transition temperature	(588±20)°C
Chemical solubility	18.5µg/cm²
Specification	20g/bottle



Firing Parameters

■ Stain/Glaze

Quick start for low-temperature firing.

Firing	Initial Temperature (°C)	Dry-Out Time(min)	Heat Rate (°C/min)	High Temperature (°C)	Hold Time (min)	Cool Time (min)
Ist Firing	450	6	45	740~820	3	2
2nd Firing	450	6	45	740~820	3	2
Long-Span Bridge	450	6	40	740~820	3	8

*It is recommended to follow the firing parameters provided by the porcelain manufacturer when using this product on high-temperature porcelain.

■ Porcelain Powder

Program	Dry Time (min)	Start Temp(°C)	Heating Rate (°C/min)	Firing Temp(°C)	Holding Time(min)	Cooling Temp(°C)	Vacuum Start Temp(°C)	Vacuum End Temp(°C)
Powder	6	500	55	910	1	600	500	909



■ Optional Accessories

The following accessories are available for purchase.

