

# Aconia<sup>®</sup> ZirBond

Aconia Zirconia Auxiliary Bonding Coating

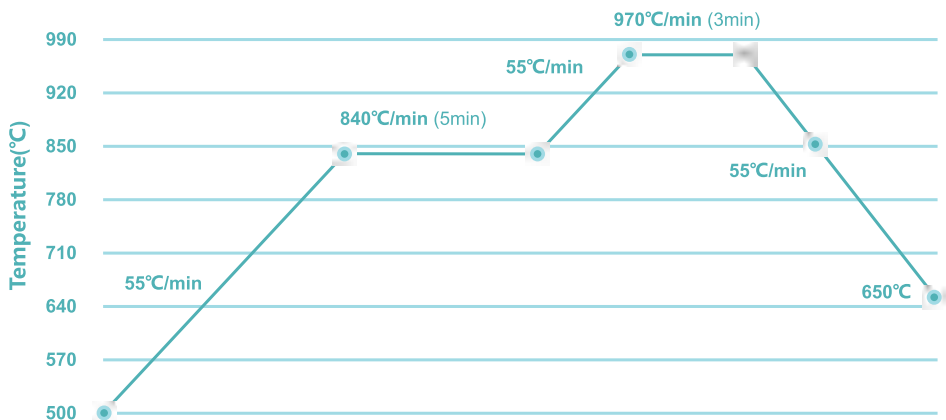


**Product Description:** ZirBond Set

**Composition:** SiO<sub>2</sub>, CaO, Al<sub>2</sub>O<sub>3</sub>, Na<sub>2</sub>O, K<sub>2</sub>O, Li<sub>2</sub>O, ZrO<sub>2</sub>, MgOMgO

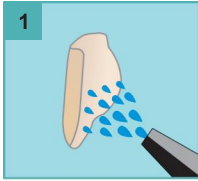
## Instructions

- 1 According to the sintering curve, the zirconia restoration is finished sintering at about 1530°C. and the shape of the restoration is trimmed and placed on the model.
- 2 Squeeze out an appropriate amount of paste from the syringe in the set and put it on the mixing box.
- 3 Fix the restoration with adhesive sticks;
- 4 Use a brushing stick to evenly apply the ointment on the tissue surface of the restoration, just apply a thin layer, not too thick, otherwise it will affect the restoration in place;
- 5 After applying the ointment, place the restoration on the high-temperature cotton of the sintering tray for high-temperature firing (the effect of vacuuming is better). The high temperature process curve is as follows:

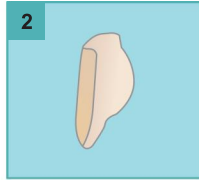


- 6 After firing and cooling, the restoration should be porcelain-glazed. For porcelain glazing, the glazing temperature should not exceed 970°C. At this time, the use of sintering nails and sintering paste should be avoided to prevent surface contamination of the restoration tissue.
- 7 The finished restoration can be sent to the doctor after glazing
- 8 When the doctor wears the teeth for the patient, he will perform acid etching treatment according to the method of glass ceramics, and then perform bonding after thorough cleaning.

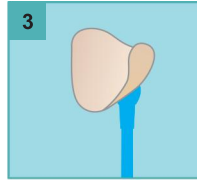
## Operation flow



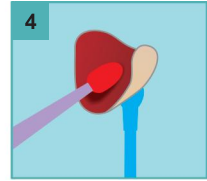
1. The treatment of restoration cleaning the inside of the veneer with water



2. Wait for the restoration to dry completely



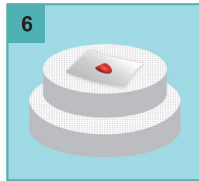
3. Adhesive rod fixation



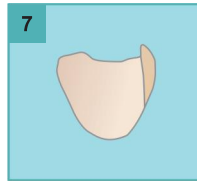
4. Apply ZirBond on the surface to be bonded



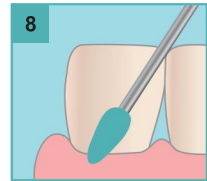
5. Place the restoration after applying the Aconia ZirBond on the high-temperature cotton and sintering tray



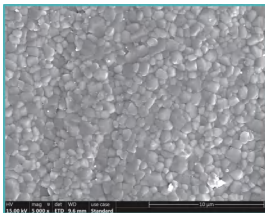
6. Sintering (the sintering tray is placed in a porcelain furnace)



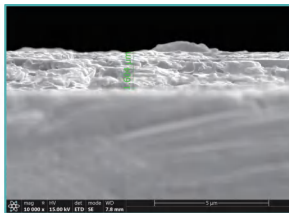
7. The effect of sintering completion



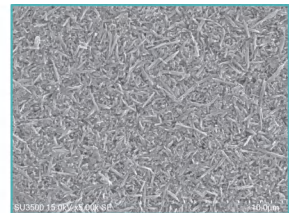
8. Shape trimming and glazing



SEM image of dense crystal structure of zirconia (5000X)



SEM image of coating thickness of ZirBond (2000X)



Electron micrograph of zirconia surface after acid etching using ZirBond(5000X)

## Storage

### Manufacture Date

**Shelf life:** two years

**Storage conditions:** This product should be stored in a non-corrosive gas, well-ventilated, clean and dry room.

**Other relevant instructions:** This product may appear segregated and stratified after long-term storage, it is recommended to mix thoroughly before using.

### Chengdu Besmile Medical Technology Co., Ltd.

www.bsm dental.com  
T:+86-28-85317108  
E:info@cdbesmile.com

### Besmile Dental America Inc.

20311 Valley Blvd, Suite#1, Walnut, CA91789  
T:(626)921-5798  
E:admin@bsmdentalus.com

  @Besmile  @besmile\_aconia

