

BSM[®]

BSM Scan M3

Create Maximum Value For Every User

BSM[®]



Chengdu Besmile Medical Technology Co., Ltd.
www.bsm dental.com
T: +86-28-85317108
E: info@cdbesmile.com

Besmile Dental America Inc.
20311 Valley Blvd, Suite# I, Walnut, CA 91789
T: (626) 921-5798
E: admin@bsmdentalus.com



  @Besmile  @besmile_acionia

GETTING TO KNOW US

Besmile is a leading company specializing in R&D, manufacturing, sales and service of CAD/CAM materials, digital dental equipment and implant systems with headquarters in Chengdu, China and a subsidiary in California, USA.

With more than 10 years of experience in implantology and prosthetics, Besmile has become a total dental solution provider in digital dentistry, effortlessly striving to create the best smiles for dental technicians, dentists, and patients, etc with advanced technology.



CAD/CAM

A dedicated manufacturer of dental CAD/CAM materials and equipment



Digital Solutions

A digital dental solution provider in fields of implantology & prosthetics



100+ Countries

Our products have reached over 100 countries & regions.



1000+ Partners

We have built lasting partnerships with over 1000 partners worldwide.



Revolutionizing Digital Dentistry with Cutting-Edge Technology:

Meet Besmile's New Intraoral Scanner



AI technology enhances scanning experience with superior intelligence



Three versatile tips cater to a wide range of application needs



Compact design, effortless operation



Clear margin lines and high precision



Rapid scanning speed, intuitive and user-friendly



True-color scanning with HD display for vibrant results



Application Features



High resolution and true image

- Accurately reproduces the true condition of teeth
- Precise anatomical detail capture
- 3D HD color rendering for effective visual communication
- Streamlined and engaging treatment experience



Multiple platforms to access the case

- 3D previews accessible via smartphone
- Instant case sharing with patients post-scan
- One-click link integration with EXOCAD



Various range of software

- Clear and simple margin line drawing
- Pre-operative scans available for implants and restorations
- Comparison of two sets of data, such as dentures and full arches
- Enhanced scanning options tailored for veneers

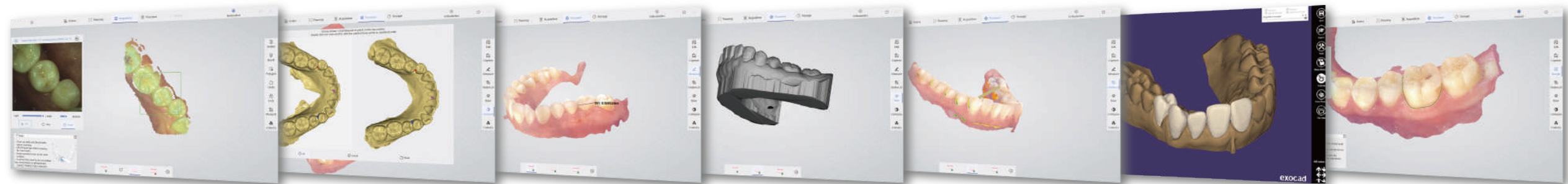


Case selection and finalized report

- Automatic generation of case reports for labs
- Multiple report options, including bridges and crowns
- User-friendly tools for clinics and labs



• Bite Check



2D Image
Store

Case
Comparison

Teeth
Measurement

Base
Adding

Undercut

Direct Export
into Exocad

Margin Line
Drawing

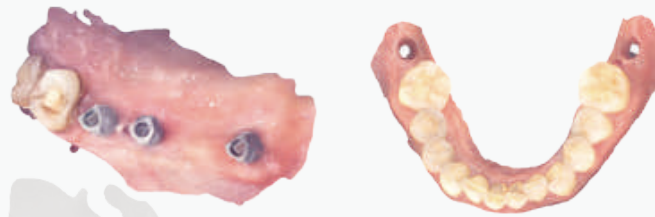
Applications



Restoration

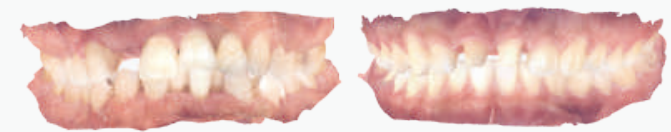
Accurate and clear shoulder margin brings efficient design, and high-definition color images help dentists effectively distinguish between gingiva and teeth.

One visit, immediate restoration.



Implant

Fast scanning with a large field of view, easily capture 3mm data of cuff, and accurately scan of metal path pin. No need to do repeat impression and improve patient treatment experience.



Orthodontics

High accuracy of the full dentition, restore the real state of full arch. Get orthodontic treatment quickly, and save time for more patients.



Parameters

1 min

Full Arch Scanning

5 tips


with 3 Dierent Angles

10 μm

More Precise

228 g

Aviation Aluminum Alloy

Overall Size	216 x 40 x 36 mm 
Tip End	19.6 x 14.6 mm Autoclavable
Field of View	18 x 16 mm
Depth of Field	0~15 mm (Adjustable up to 20mm)
Patents	40+
Certicates	CFDA/CE/ISO13485/FDA/INMETRO/ANVISA, etc.
Interface	USB3.0
Data Output	STL PLY PTY *encrypted data available

PRODUCT INFORMATION

Category	BSM Scan M3
Technology	Staring Scanning with Coded Structure Light
Camera Number	x 3
Scan Field	18x16mm
Scan Depth	0-15 mm (Adjustable up to 20mm)
Accuracy	≤15μm
Precision	≤10μm
True Color	Full HD
Anti Fog System	Intelligent Heating
Full Arch Scanning Time	1 min
Handpiece Enclosure	Aviation Aluminum Alloy
Handpiece Dimension	216 x 40 x 36 mm
Handpiece Weight	228g
Tip Types	3 types (N/M/D)
Number of Tips included	x 5 (Autoclavable)
Tip Autoclave Cycle	20-50 times
Calibrator	Automatic
Scanning Control	Button
Data Interface	USB3.0
Cable Length (m)	2m
Power Supply Type	AC/DC Medical Power Adapter
Supply Voltage (V)	100-240V/50-60Hz
Supply Current (A)	0.7-1.5A
Storage Temperature (°C)	-10°C-55°C

AFTERSALES

Category	BSM Scan M3
Standard Warranty	1 year
Extended Warranty	2-3 years available

SOFTWARE

Category	BSM Scan M3
Types of Scanning	Orthodontics, Implant, Restoration
Image Capture	Yes
3D Data Preview	Yes
Output Files	STL, PLY, PTY (encrypted for user)
Cloud Service	Yes
Cloud Service Price	5GB/free
Direct Compatibility with Dental CAD	Exocad*
Main Image Processing Tools	Trim/Edit/Recover/Lock, etc.
Margin Line Drawing	Yes
Occlusal Match	Yes
Undercut	Yes
Data Comparison	Yes
AI Technology	Auto Tissue Remove, Overlap Correct, etc.
Software License	Free
Software Upgrade	Free
Transfer Data with API	Available

*All names, logos, brands and other trademarks featured or referred to within this brochure are the property of their respective trademark holders.

PC REQUIREMENTS

Category	BSM Scan M3
CPU	Intel i7-12700H/Intel i7-11800H or above
RAM	16G/32G
Hard disk	SSD 512G or above
GPU	RTX2060/RTX3060 or above
Operating system	Windows10/11 64bit
Display	Resolution 1920×1080 and above

*Check the PC Recommendation Catalog on our website for more detail.