

BSM-520D

5-Axis Dental Milling Machine



Revolutionary technologies

Top-quality results



Chengdu Besmile Medical Technology Co., Ltd.
www.bsm dental.com
T:+86-28-85317108
E:info@cdbesmile.com

Besmile Dental America Inc.
20311 Valley Blvd, Suite# I, Walnut, CA 91789
T: (626)921-5798
E:admin@bsmdentalus.com

@Besmile @besmile_aconia





BSM-520D

5-Axis Dental Milling Machine

BSM-520D is a 5-Axis dry-milling machine for dental CAD/CAM system with wide range of materials, featuring high accuracy, durable stability and excellent compatibility. It is an ideal choice for high-precision restorations including bridges, frames, abutments, base and complicated operations like zirconia perforation. Equipped with premium spindle, smart CAM nesting system and intelligent touch screen,BSM-520D offers better disc handling, wider material capabilities, automatic tool change to deliver a higher efficiency.

CAD/CAM Digital Processing



Key Features



High Compatibility

B Axis (-30°~+40°) wide rotation range
Indications: crown, bridge, inlay, onlay, abutment, veneer



Higher ROI

- 1/3 holder, simplified operation; Increased 20% production per block
- 2-second block insertion
- Special dust-proof design ensures long lifespan



Intelligent processing

- Smart CAM nesting strategy
- Integrated PC with 9.7 inch intelligent touch screen
- Automatic changer for 4 tools with haptic tool detection and tool breakage monitoring



Excellent Reliability

- Premium spindle with 60,000RPM
- Heavy industrial quality and aerometal structure
- The gantry structure and thermal expansion symmetric design ensure accuracy stability



High Accuracy & High Efficiency

- Digital servo system with high resolution, ±0.005mm repetition accuracy
- ±0.01mm installation accuracy for per axis
- 90° vertical processing

Milling speed: zirconia posterior anatomic crown ≈ 17' (Aconia HT+ 14mm); zirconia 3-unit crown bridge ≈ 24' (Aconia HT+ 14mm)



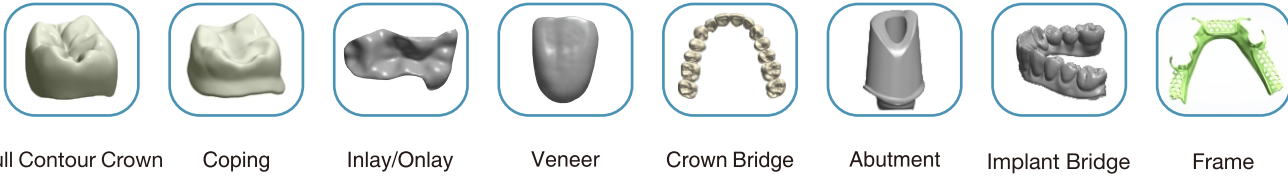
Wide Accessibility



Millable Materials



Millable Restorations



Technical Parameters

| | | | | |
|-------------------|-------------------------------|----------------------|------------------------|----------------------|
| Dimension (W*D*H) | 570mm*680mm*780mm | Weight | | 130kg |
| Cooling system | Automatic air-cooling spindle | Motor type | | AC Servo-motor |
| Number of axes | 5 | Voltage/power | | 220V//3.9KW |
| Tool type | φ4mm*2mm (Ball-mill) | φ4mm*1mm (Ball-mill) | φ4mm*0.6mm (Ball-mill) | φ4mm*1 mm (End-mill) |
| Built-in tools. | 4 | Dry milling | | Support |
| Temperature | 5°C~40°C | Air pressure | | >0.65MPa |